

Data Sheet



**Brackish Water
Reverse Osmosis (RO) Membranes**

LG BW 400 UES
Ultra Low Energy

Overview

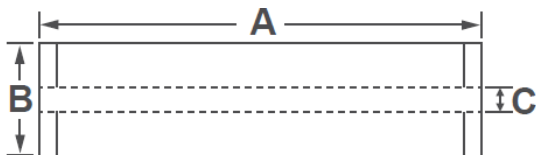
LG Chem's NanoH₂O™ brackish water RO membranes serve various municipal and industrial applications and have been operating in the major utilities around the world. Incorporating innovative Thin Film Nanocomposite (TFN) technology, all LG BWRO membranes provide superior performance along with intrinsic anti-fouling property and are suitable for applications where consistent and reliable performance is a must.

LG BW UES membranes offer high permeability at ultra-low feed pressure, significantly reducing operating costs: suitable for low salinity brackish water applications. LG BW 400 UES membranes incorporate state-of-art feed spacer technology, which can greatly reduce differential pressure and cleaning frequency.

Product Specifications

Active Membrane Area, ft ² (m ²)	Permeate Flow rate, GPD (m ³ /d)	Stabilized Salt Rejection, %	Minimum Salt Rejection, %	Feed Spacer, mil
400 (37)	11,500 (43.5)	99.0	98.0	34, low dP

Test Conditions : 2,000 ppm NaCl at 25°C (77°F), 125 psi (8.6 bar), pH 7, Recovery 15%.
Permeate flows for individual elements may vary +/-20%.



A, mm (in.)	B, mm (in.)	C, mm (in.)	Weight, kg (lbs.)
1,016 (40)	200 (7.9)	28.6 (1.125)	16 (35)

All dimensional information is indicative and for reference purpose only. Please contact LG Chem for detailed technical specification.

Operating Specifications

For more information and operating guidelines, visit www.lgwatersolutions.com

Max. Applied pressure	600 psi (41 bar)
Max. Chlorine concentration	< 0.1 ppm
Max. Operating temperature	45°C (113°F)
pH Range, Continuous (Cleaning)	2-11 (2-12)
Max. Feedwater turbidity	1.0 NTU
Max. Feedwater SDI (15 mins)	5.0
Max. Feed flow	75 gpm (17 m ³ /h)
Max. Pressure drop (ΔP) for each element	15 psi (1.0 bar)

The information and data contained herein are deemed to be accurate and reliable and are offered in good faith, but without guarantee of performance. LG Chem assumes no liability for results obtained or damages incurred through the application of the information contained herein. Customer is responsible for determining whether the products and information presented herein are appropriate for the customer's use and for ensuring that customer's workplace and disposal practices are in compliance with applicable laws and other governmental enactments. Specifications subject to change without notice. NanoH₂O is the Trademark of The LG Water Solutions or an affiliated company of LG Chem. All rights reserved. © LG Chem, Ltd.

Data Sheet



**Brackish Water
Reverse Osmosis (RO) Membranes**

LG BW 400 UES
Ultra Low Energy

Referential Performance at 500 ppm NaCl

	Pressure	Projected Performance*
LG BW 400 UES	100 psi (6.89 bar)	11,300 GPD, 99.3%
	110 psi (7.58 bar)	12,500 GPD, 99.4%

Test Conditions : 100/110 psi, 500 ppm NaCl at 25°C (77°F), pH 7, Recovery 15%. All calculated data is obtained from Q+ software.